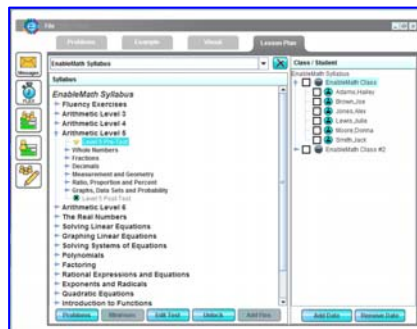


# Teacher Quick Start

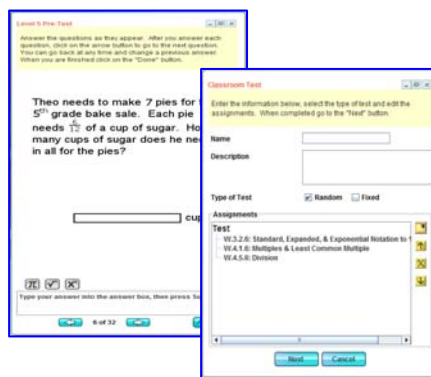
**EnableMath is the complete solution** for enabling a student to gain procedural fluency in arithmetic and algebra. It builds on the proven need for productive practice to mastery. This outline is designed to provide you, as the primary guide to student learning, with a brief description of the all tools you will need to be successful in guiding your students to mastery. If you need to set up your class first, please turn this card over to **step 9**. In addition, please do not hesitate to contact us for help anytime.

[support@enablelearning.com](mailto:support@enablelearning.com)

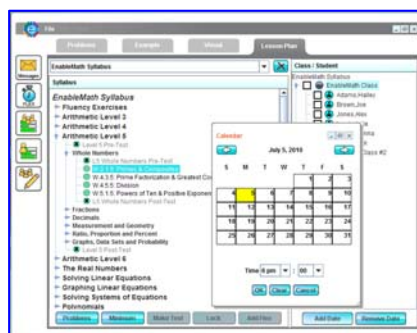
1. **Readiness Assessments** are included in most Syllabi at the grade level for arithmetic or modular level for algebra content. These assessments can give you a good indication of the strengths and weaknesses of each of your students and enable you to create a personalized lesson plan for each of them.



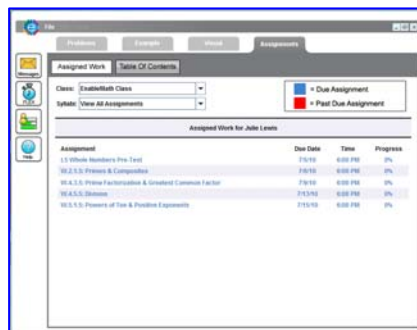
2. The **Test Builder** enables you to build customized tests and quizzes from any content in the Syllabus. On the **Lesson Plan** screen choose a module or lesson (not an individual assignment) and click the **Make Test** button on the bottom of the screen. Problems are drawn from the selected assignments in either a random format, in which problems are selected from a range you select so that each student receives different set of problems or in fixed format with each student getting the same problems. To assign tests select the test and click the **Unlock** button.



3. Once you know where your students need to start, make **Assignments** from the **Lesson Planner** by dating them. Assignments can be dated for the entire class, groups or individuals. Select an assignment, choose the Class/Student on the right panel, and click the Add Date button on the bottom of the panel. Deleting or changing dates is just as easy.



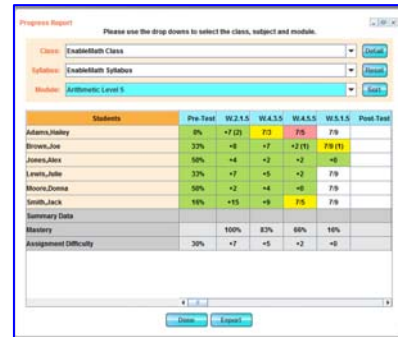
4. Students will see all their assignments that are dated and incomplete when they login. They show up in the student **Assignments** tab with the oldest incomplete assignment at the top of the list. Students can also select assignments from our complete basic arithmetic through algebra content by clicking the **Table of Contents** button.



5. You can add **FLEX** (Fluency Exercises) to a Syllabus if they are not already included and assign them to you students. FLEX exercises build fact fluency in whole number arithmetic. **Practice Pattern** presents these problems in order so that students can learn the pattern. **Start Exercising** randomizes the problems to build fluency. You can set the minimum number of correct answers required in these one minute exercises, and students will continue to see the FLEX in their assigned work until the minimum is reached.



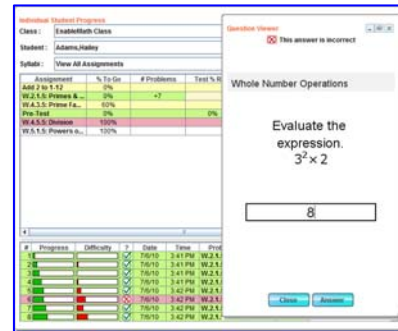
6. **Student Progress** can be viewed in a number of ways, including a weekly email report. The most comprehensive view is through **Class Progress** that you access with the **View Class Progress** button on the left side tool bar. You will see a summary of the class progress, or choose a Module to look at how your students are doing on each assignment. You can track both individual student progress as well as the relative difficulty of assignments. Mastery is the key to student success. That is what we care about and what we emphasize in reporting.



The screenshot shows the 'Class Progress' report interface. It includes dropdown menus for 'Class' (EnableMath Class), 'Syllabus' (EnableMath Syllabus), and 'Module' (Arithmetic Level 1). Below these is a table showing progress for individual students and summary data.

Students	Pre-Test	W.2.5.5	W.A.3.5	W.A.5.5	W.S.1.5	Post-Test
Adams,Haley	8%	+7 (2)	7/5	7/5	7/5	7/5
Brown,Joe	32%	-8	+7	+2 (1)	7/5 (1)	7/5 (1)
Conner,John	50%	+4	+2	+2	+6	+6
Levens,John	37%	+7	+5	+2	7/5	7/5
Moore,Danna	50%	+2	+4	+8	-8	7/5
Smith,Jack	16%	+15	+9	7/5	7/5	7/5
Summary Data						
Mastery		100%	83%	88%	18%	
Assignment Difficulty	30%	+7	+5	+2	+8	

7. The **Individual Student Progress** view is more valuable if you are assigning different work to each student and wish to follow that particular student's work separately. In both the Class and Individual progress views you can look at the detail of an assignment down to the problem level and even reset the assignment to require the student to redo it.



8. Communicating with individual students or the whole class is easy using our **Message Center** within the program. You can even capture and send live screen shots of **Examples** or **Visuals** to students to help them understand a concept. The Message Center works both ways so student can communicate with you as well.



9. To set up a class, click the **Manage Classes** button on the left side of the **Lesson Plan** screen. Click **Add Class** and complete the information. Select a Syllabus, press OK and enroll your students to make them productive math learners.

